

# Wind Direction Sensor

Precise Navigation, Affordable Precision

## Overview

The MBMet 110 series Wind Direction Sensors, offers unparalleled precision and unwavering accuracy in wind direction determination, all while maintaining an accessible price point. MBMet 110 series construction reflects high reliability and durability providing minimal maintenance. The sensor material design offers superb dirt and weather resistance for long-term measurement stability in dusty environments.

## Benefits and Features:

- Low starting threshold
- Strong corrosion resistant ability
- Various Output signal options
- Double bearing design
- Long-term stability in dusty environment
- Easy Installation



## Technical Specifications

| Model/Parameter | MBMet – 110A | MBMet – 110B  | MBMet – 110C | MBMet – 110D |
|-----------------|--------------|---------------|--------------|--------------|
| Output          | 4-20mA       | RS-485 Modbus | 0-5V         | 0-10V        |
| Input Voltage   | 12 to 24VDC  |               |              |              |

### Wind Direction

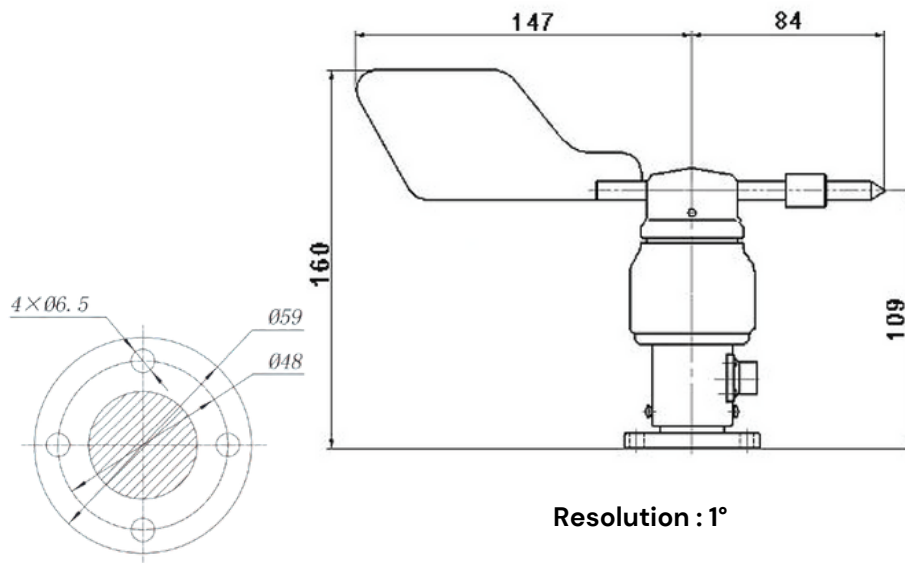
|                     |           |
|---------------------|-----------|
| Measuring Range     | 0 to 360° |
| Starting Wind Speed | <0.5m/s   |
| Survival Wind Speed | 70m/s     |
| Accuracy            | ± 2%FS    |

### General Specifications

|                           |  |
|---------------------------|--|
| Operating Temperature     | -30°C to +70°C   |
| Ingress Protection Rating | IP65   |
| Storage Condition         | 10°C to 60°C @ 20% to 90%RH                            |
| Cable Type/Length         | UV protected cable/3 meters                            |
| Dimension                 | Cup rotor : ø200mm, Height : 150mm                     |
| Body Material             | Vane : 304 stainless steel, Main Body : Aluminum alloy |
| Weight (packed)           | 410g   |

## DIMENSIONS & MOUNTING

Flange mounted, fix four screws on the bracket and install the product horizontal.



**Note :** There is one red or white marked point on the sensor, it should be pointed towards north direction while installing.

## Ordering String

| Model | Series | Output | Resolution | Accessories | Cable Length |                                   |
|-------|--------|--------|------------|-------------|--------------|-----------------------------------|
| MBMet |        |        |            |             |              |                                   |
|       | 110    |        |            |             |              |                                   |
|       |        | A      |            |             |              | 4-20mA                            |
|       |        | B      |            |             |              | RS-485 Modbus                     |
|       |        | C      |            |             |              | 0 to 5V                           |
|       |        | D      |            |             |              | 0 to 10V                          |
|       |        |        | A          |             |              | 1°                                |
|       |        |        |            | A           |              | With Pole Mounting Accessories    |
|       |        |        |            | X           |              | Without Pole Mounting Accessories |
|       |        |        |            |             | 3000 mm      | Default                           |
|       |        |        |            |             | XXX mm       | As Required                       |

For example : MBMet-110B-AA3000

Parameter : Wind Direction, Output : RS-485 Modbus, Resolution : 1° with Pole Mounting Accessories,  
Cable Length : 3 meters

## SEE ALSO

MBMet 100 Wind Speed Sensor

MBMet 501 Smart Solar Irradiation Measurement

MBMet 800 PV Module Temperature Sensor

View our complete range of Weather Sensors