

Document Name:	ENVIRONMENTAL TEST REPORT
Unit Name:	PM130 PLUS WITH MODULE DI / DO
Customer Name:	SATEC POWERFUL SOLUTIONS
Document Rev.:	(--)
Document Status:	Released
Drawing/Doc. Id:	2122A01876
Last Updated On:	November 29, 2007
Last Updated By:	Yaron Mashmur



Elisra Electronic Systems Ltd.
Operations & Materials Division
Environmental Test Laboratory

©2007 Elisra Electronic Systems Ltd.

This document contains confidential information which is protected by copyright and is proprietary to Elisra Electronic Systems Ltd. No part of this document may be used, copied, disclosed, or conveyed to another party without prior written consent of Elisra Electronic Systems Ltd.

LABORATORY DETAILS

Lab Name	Elisra - Environmental Test Laboratory
Address	48, Mivtza Kadesh St. Bene Beraq, 51203 Israel
Tel.	972-3-6175266, 972-3-5703708
Fax.	972-3-6175866
E-Mail	dovc@elisra.com

CUSTOMER DETAILS

Customer Name	SATEC POWERFUL SOLUTIONS
Address	HAR CHOTZVIM INDUSTRIAL PARK POB 45022 JERUSALEM 91450 ISRAEL
Tel.	972-2-5411014
Fax.	972-2-5812371
E-Mail	avib@satec.co.il

DOCUMENT CONTROL

This document is a controlled document. It is your responsibility to ensure that you have the appropriate version of this document. This document is not subject to version control when printed. This document was developed using version 2.01 of the iDDE-2000/etr editing environment developed and supported by the corporate Software Engineering Department of the Quality Management Division. The format and contents of this document is in accordance with those provided by version 2.01 of the iDDE-2000/etr environment.


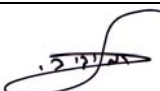
a. DOCUMENT HISTORY

The following table records information regarding released editions of this document and briefly describes their file location, purpose and changes made to them.

Edition Id	Release Date	Responsible Author	File Reference, Purpose and Description of Changes
---	29/11/2007	Yaron Mashmur	File Reference: C:\Documents and Settings\58yaron\My Doc.\REPORTS\SATEC-1876 Purpose: Changes:

b. DOCUMENT APPROVALS

This edition has been approved by:

	Name	Title	Signature	Date
Author	Guy Barkay	Test Engineer		November 29, 2007
Approved	Dov Carmeli	Lab Manager		November 29, 2007

c. DISTRIBUTION LIST

Organizational Unit	Title	Title	Title	Title

d. OPEN ISSUES

This part of the document control section is used to record and track open issues and/or unresolved questions. As the development of this document proceeds, these issues and questions should be resolved and then removed from the list.

No.	Subject/Section	Description
1.		
2.		
3.		

TABLE OF CONTENTS

1.	INTRODUCTION	5
1.1.	PURPOSE.....	5
1.2.	SCOPE.....	5
1.3.	GLOSSARY	5
1.4.	APPLICABLE DOCUMENTS	5
1.5.	EXECUTIVE SUMMARY	6
2.	SINE VIBRATION TEST	7
2.1.	UNIT UNDER TEST OVERVIEW	7
2.2.	TECHNICAL SOURCE	7
2.3.	TEST INSTRUMENTATION	7
2.4.	TEST PROCEDURE	7
2.4.1.	EXCLUSIONS FROM THE TEST METHOD	7
2.4.2.	VIBRATION TEST PROCEDURE DESCRIPTION	8
2.4.3.	TEST PERFORMANCE.....	8
2.4.4.	PM130 PLUS WITH MODULE DI/DO MOUNTED ON ELECTRODYNAMICS SHAKER	8
2.5.	TEST RESULTS	9
2.6.	PRODUCT RESPONSE GRAPHS	10

1. INTRODUCTION

1.1. PURPOSE

The purpose of this document is to verify that the **PM130 PLUS WITH MODULE DI/DO** meets all requirements as per the applicable documents.

1.2. SCOPE

The scope of this Environmental Test Report includes the environmental test results as specified by the customer and by the related resources.

1.3. GLOSSARY

Abbreviation / Acronym / Term	Explanation / Description
iDDE	Integrated Document Development Environment
ID	IDentifier
NA	Not Applicable
TBD	To Be Defined
ETR	Environmental Test Report
ETS	European Telecommunication Standard
IEC	International Electronic Community
NC	Not Controlled
UUT	Unit Under Test

1.4. APPLICABLE DOCUMENTS

This section contains a list of resources (e.g., documents, files, tools) referenced by or related to this document. All documents' revisions are the latest known on the date of the contract signing.

- ETSI EN 300 019-2-1.
- IEC-68-2-6, Test Fc.

1.5. EXECUTIVE SUMMARY

The following table summarizes the tests that have been performed in Elisra - Environmental Test Laboratory.

SATEC POWERFUL SOLUTIONS performed the functional tests and they are his sole responsibility.

No.	Test Name	Pass/Fail
1.	Sine Vibration Test	Pass

Statement Of Compliance with test requirements.

We, Elisra - Environmental Test Laboratory, declare under our sole responsibility that the **PM130 PLUS WITH MODULE DI/DO** was tested to comply with the requirements of the applicable environmental test specification.

2. SINE VIBRATION TEST

2.1. UNIT UNDER TEST OVERVIEW

Test Date	28/11/07
Customer Representative	Avi Beim
Customer	SATEC POWERFUL SOLUTIONS
Unit Name	PM130 PLUS WITH MODULE DI/DO
Item Manufacturer	SATEC POWERFUL SOLUTIONS
Serial Number	735880

2.2. TECHNICAL SOURCE

- ETSI EN 300 019-2-1 V2.1.2 (2000-09) TABLE 4: TEST SPECIFICATION T 1.2: WETHERPROTECTED, NOT TEMPERATURE-CONTROLLED STORAGE LOCATIONS – MECHANICAL TESTS.
- IEC-60068-2-6 METHOD: Fc: VIBRATION (SINOUSOIDAL)

2.3. TEST INSTRUMENTATION

Instrumentation Name	Manufacturer / Model	Calibration Expired Date
Electrodynamics Vibration System	L.D.S – model: V-850 L.D.S - Model: 964-LS	N.C.R
Vibration Control System	UNHOLTZ DICKIE Model: UD VWIN	30/08/2008
Control Accelerometer	Endevco Model 224C.	30/04/2008

2.4. TEST PROCEDURE

2.4.1. EXCLUSIONS FROM THE TEST METHOD

Not applicable.

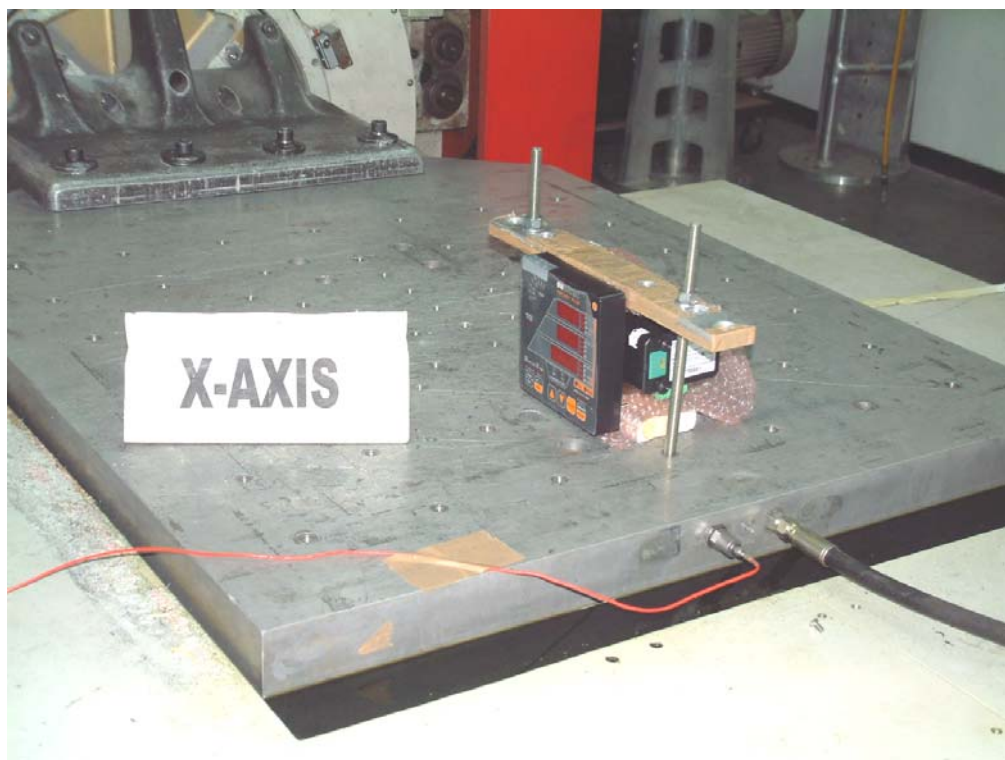
2.4.2. VIBRATION TEST PROCEDURE DESCRIPTION

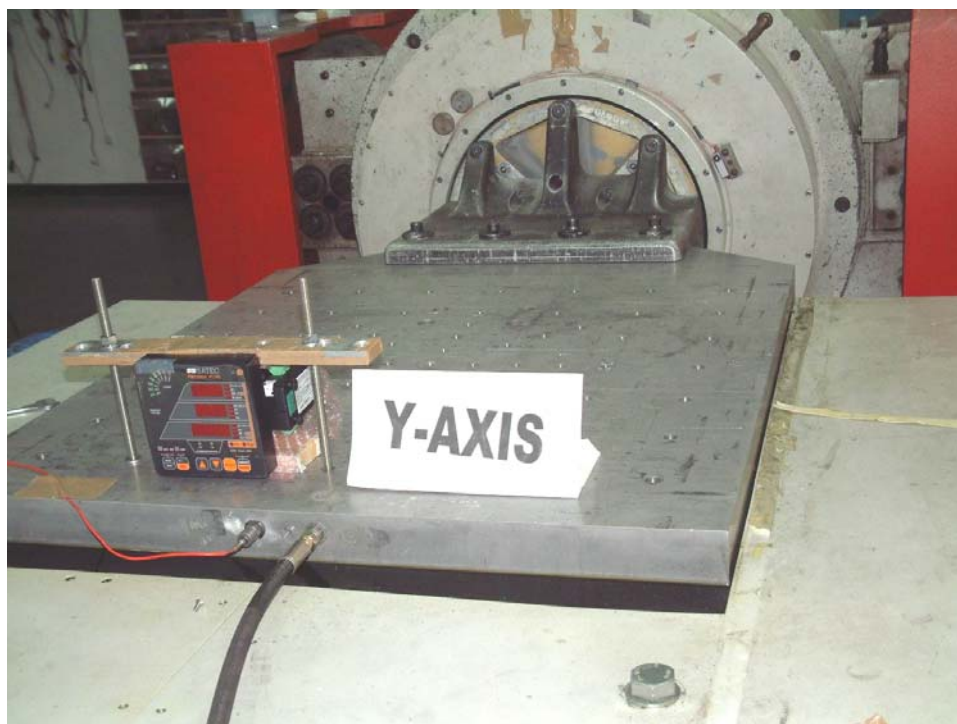
Item Position	The test item was rigidly attached to vibration exciter
Vibration Axes	3 (X, Y, Z).
Sweeping Frequency	Logarithm. From: 10 Hz To: 150 Hz. Within: 7.5 minutes.
Vibration Duration in Each Axis	75 minutes (10 Sweeps)
Max. Vibration Level	0.5 g

2.4.3. TEST PERFORMANCE

Functional Test	<ul style="list-style-type: none"> Performed by customer representative at the end of test.
Visual Test	<ul style="list-style-type: none"> Performed by customer representative at the end of test.

2.4.4. PM130 PLUS WITH MODULE DI/DO MOUNTED ON ELECTRODYNAMICS SHAKER



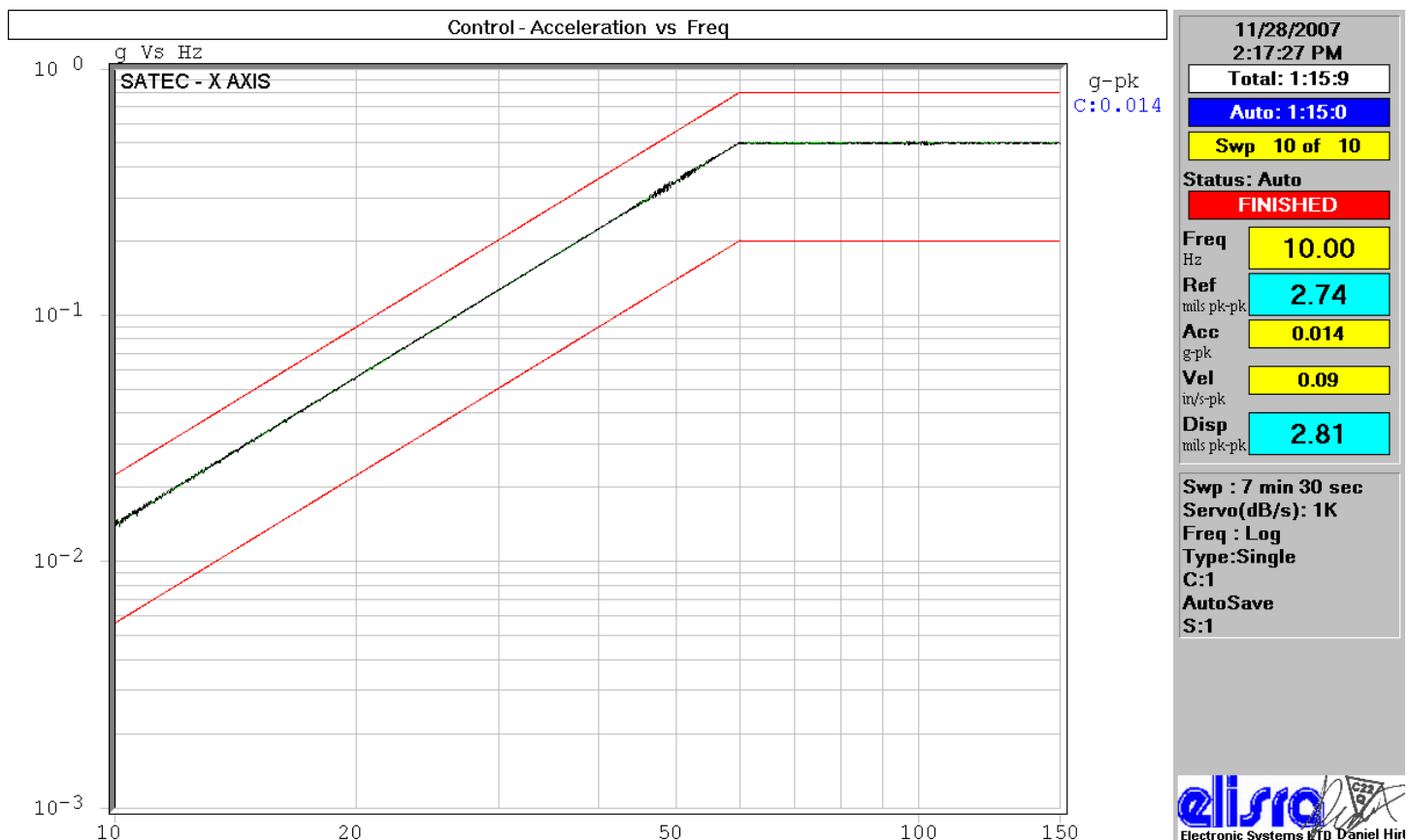


2.5. TEST RESULTS

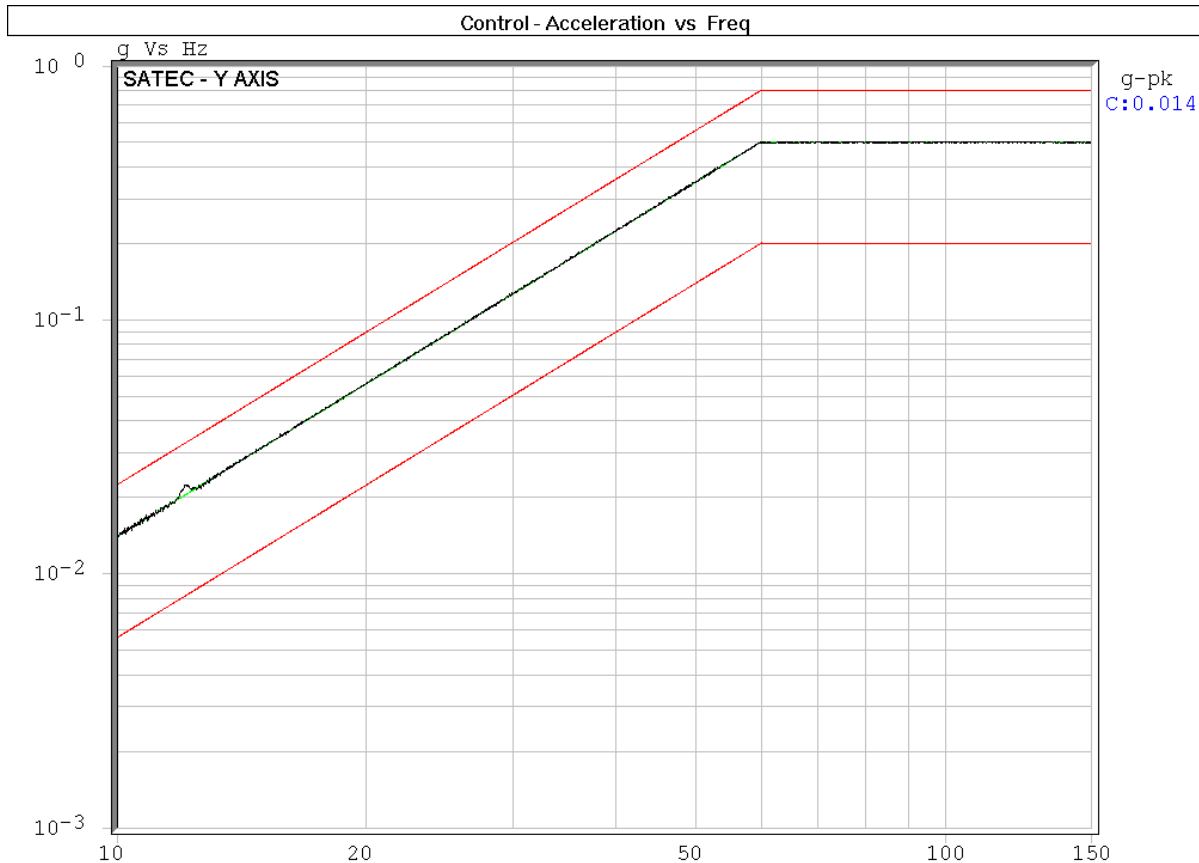
In visual inspection at completion of the test, no external damage observed.
The customer representatives at the end of the test have conducted operational and visual tests.
Pass O.K.


2.6. PRODUCT RESPONSE GRAPHS

SETUP NAME: IEC_68_2_6
 SETUP DESC: IEC 68-2-6
 SETUP COMMENTS: SATEC - PM130 PLUS WITH MODULE DI/DO
 S/N: 735880
 SINE VIBRATION TEST
 RUN NAME: run5
 SAVE NUMBER: 1



SETUP NAME: IEC_68_2_6
 SETUP DESC: IEC 68-2-6
 SETUP COMMENTS: SATEC - PM130 PLUS WITH MODULE DI/DO
 S/N: 735880
 SINE VIBRATION TEST
 RUN NAME: run6
 SAVE NUMBER: 1



11/28/2007 3:49:28 PM	
Total:	1:15:7
Auto:	1:15:0
Swp	10 of 10
Status:	Auto
	FINISHED
Freq Hz	10.00
Ref mils pk-pk	2.74
Acc g-pk	0.014
Vel in/s-pk	0.09
Disp mils pk-pk	2.72
Swp : 7 min 30 sec	
Servo(dB/s): 1K	
Freq : Log	
Type:Single	
C:1	
AutoSave	
S:1	
	

SETUP NAME: IEC_68_2_6
 SETUP DESC: IEC 68-2-6
 SETUP COMMENTS: SATEC - PM130 PLUS WITH MODULE DI/DO
 S/N: 735880
 SINE VIBRATION TEST
 RUN NAME: run4
 SAVE NUMBER: 2

