

# eXpertpower

## ENERGY MANAGEMENT SOLUTION



### About eXpertpower

eXpertpower™ software solution provides comprehensive energy management, billing, demand response, power quality analysis, demand side management and generator control. eXpertpower™ is available either as an online service (SaaS – Software as a Service) or as a standalone software package. eXpertpower™ is a true enterprise platform. It is built with a commitment for flexible and standardized architecture. The cross-browser support and customizable user interface engine;

the full API (Application Programming Interface) and adaptable 3<sup>rd</sup> party devices modules; or the two-way configurable AMR (Automatic Meter Reading) communication solution—all were designed to support and serve as a business enterprise solution.

By supplying both the infrastructure and the fundamental power management applications, eXpertpower™ sets a new standard in the energy industry.

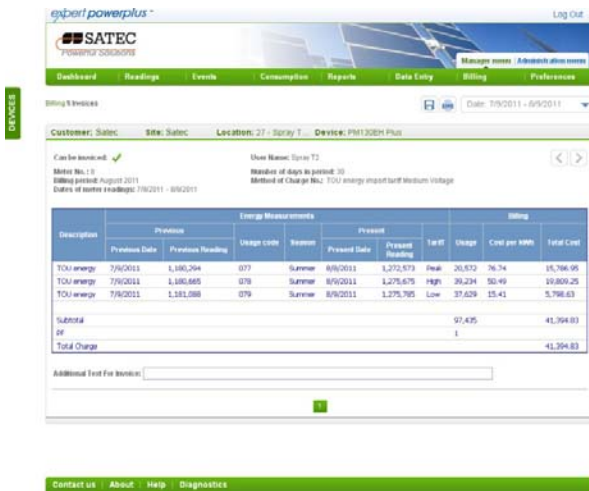
## Main Modules

### Energy Management



- Compare energy consumption in different locations
- Analyze differences
- Cost calculation
  - Compare with different price lists
- Consumption types
  - Import, Export
  - TOU (Time Of Use)
- Consumption sources
  - Electricity
  - Water
  - Gas
  - Photovoltaic
  - Fuel
  - Wind

## Billing and Sub-Metering

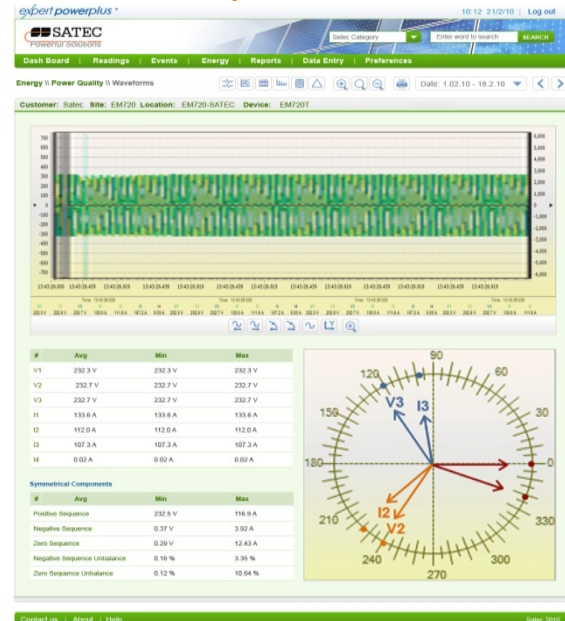


- Dynamic tariff definition—define a complete set of billing structures:
  - Price Types
  - Usage Types
  - Seasons
  - Price Lists
- Accurate cost calculation
- Complete Sub-Metering solution
  - Tenants management
  - Flexible invoicing options
  - Compare invoices
- Easy-to-go manual calculator
- Dynamic billing reports definitions
  - Select invoice columns
  - Aggregation options
  - Multiple formats

## Demand Response

- Automatic/Manual generator control
  - Operate generators based on incentives, time periods, availability
  - Interface to utility load profiles
  - Complete energy and cost calculations and reports
- Power stations load management
  - Track energy production and consumption for providers and consumers
  - Automated load profiles updates
  - Consolidate accurate billing for energy production and usage. Based also on out-of-plan usage and production

## Power Quality



- Compliance reports
  - EN50160, IEEE1159 and GOST 13109 standards.
- Event summary
  - Get accurate summary for each event.
- Harmonics
- Waveforms
  - Advanced waveforms display that enables detailed analysis.
- Phasor display

## Enterprise Tools

- State-of-the-art user interface
  - Cross-browser support (Internet Explorer, Firefox, Chrome, Opera, Safari)
  - Personalized dashboards
- Events and Alarms
  - Multi-level criteria and thresholds
- Remote device configuration and control
- Connect to any Modbus-compatible 3<sup>rd</sup> party devices
- Integration with 3<sup>rd</sup> party enterprise applications (BMS, SCADA, ERP, CRM)
- Built-in data export to different formats (Excel, PDF etc.)
- Flexible access permission per user, per group

eXpertpower™  
Handheld  
Remote Monitor



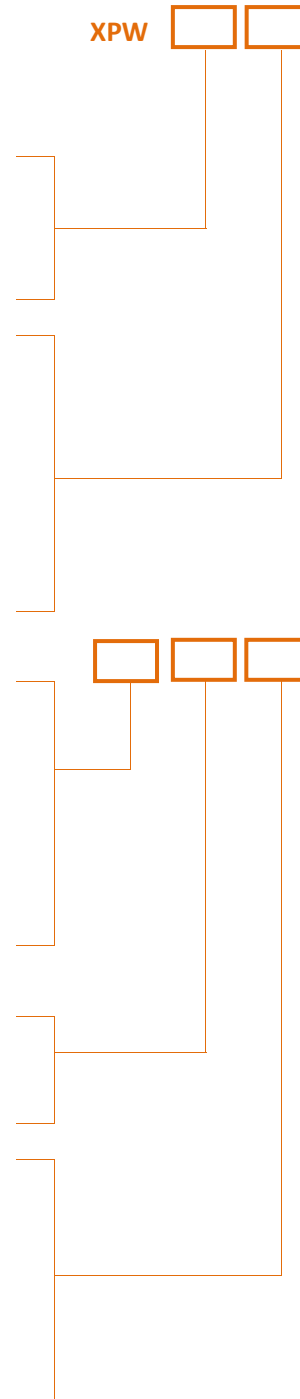
## Technical Notes

<b>Operating System</b>	Windows XP, Vista, 7, 2003/2008 server. Either 32 or 64 bit
<b>Database</b>	MSSQL Server 2008. Support also Express edition.
<b>Framework</b>	.Net Framework 3.5
<b>Web Server</b>	IIS 5 and higher
<b>Browsers</b>	IE 7 and higher, Firefox, Chrome, Opera, Safari
<b>Num. of Devices</b>	Unlimited based on server specification

## Order String

eXpertpower SaaS (Software as a Service)		XPW
One time setup fee for new site (new or existing customer)		
OPTIONS		
Installation and Configuration – on time charge		
Customized graphic page without data		GRA
Single Line Diagram, up to 8 devices, 3 param./device		SLD
Complex graphic pages, more devices etc.		(contact factory)
New utility tariff		TAR
Monthly Charges per Device		
Basic data (at a frequency every 6 minutes or more)		BM
Power Quality and Faults (add-on for basic measurement)		PQ
Frequent readings (2 min<every <6 minutes, for basic data)		FR
Virtual Device (Basic data only)		VD
GPRS data collection (not including cost to cellular and data collection providers)		GP
Billing service - per bill per month in PDF format		BIL
Support for remote operation of generators		GEN

eXpertpower Pro Edition		XPP
Stand alone. Includes license for one logical site, once computer and 10 users.		
eXpertpower Billing		BIL
Billing for eXpertpower Pro Edition, allows issuing invoices, manage customer charges and more		
Web Services API		WEBS
Web Services support to communicate to SCADA or other software		
LICENSING (order qty)		
Licensing per communicating device		
License for single PM130 or EM133		LIL
License for single PM172 or 3rd party device		LIM
License for single BFM or device with power quality		LIH
Licensing per connection/user		
License for one concurrent remote web interface connection and 10 users.		LIU
For example, XPP plus 2 LIUs allow:		
→ Installation of eXpertpower on server with local or remote SQL database (database licensing may be required)		
→ Use eXpertpower using Internet browser on the server		
→ Configuring up to 30 users		
→ Using the eXpertpower using Internet browser on as many computers as required, maximum 2 active on the same time		



Note: XPW requires MS SQL. Customers may use any version including the free SQL Express. The MS-SQL should be purchased separately.



Innovative Electronics For You

## M. B. Control & Systems Pvt. Ltd.

### Corporate Office

31/1, Ahiripukur Road, Kolkata 700019, West Bengal, India

Call : +91 98313 30473, 98312 06454 | Fax : +91 033 2287 0445

Email : enquiry@mbcontrol.com, service@mbcontrol.com (for service related queries only)

Website : www.mbcontrol.com